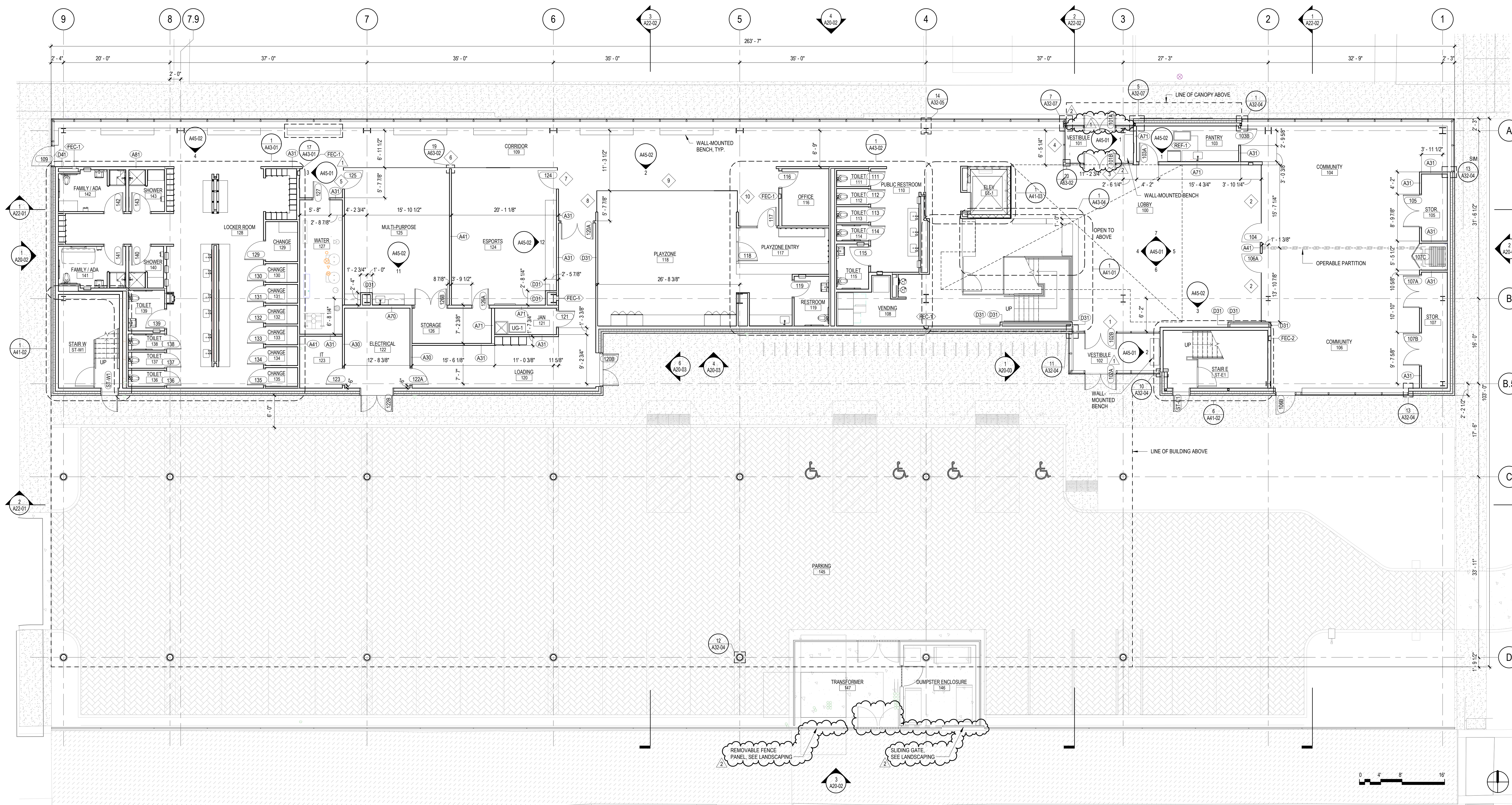




2	ISSUED FOR PERMIT REVISIONS	01/10/2022
1	ADDENDUM #1	10/26/2021
	ISSUE FOR BID/PERMIT	10/15/2021
	ISSUE	08/12/2021
Job Number	022527.000	
TITLE		



1 FLOOR PLAN - LEVEL 01
1/8" = 1'-0"

FLOOR PLAN LEGEND

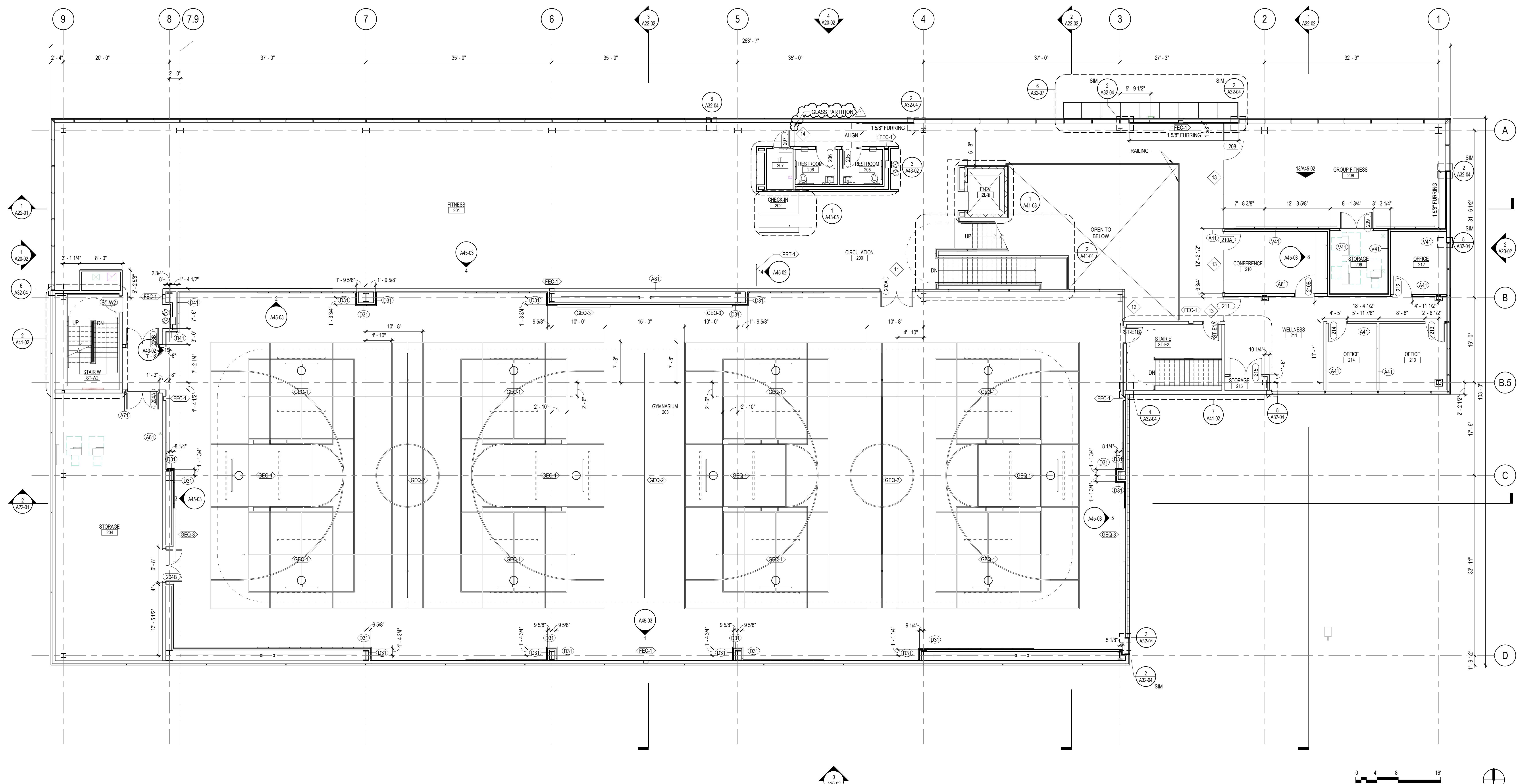
- EXTERIOR ELEVATION TAG
- BUILDING SECTION TAG
- INTERIOR GLAZING REF: A63-01 FOR GLAZING ELEVATIONS.
- DOOR TAG REF: A62-01 FOR DOOR SCHEDULE.
- PARTITION TAG REF: A61-01 FOR CHARTS
- EQUIPMENT TAG REF: A64-01 FOR EQUIPMENT SCHEDULE
- FLOOR DRAIN

**FLOOR PLAN
GENERAL NOTES**

1. PARTITION TYPES LISTED ON A61-01 REFER TO G01 SERIES "CODE COMPLIANCE PLANS" FOR GRAPHIC EXTENT OF FIRE RATED PARTITIONS. REFER TO PARTITION TYPE CHARTS ON A61-01 FOR LOCATION OF SOUND ATTENUATION BLANKETS.
2. REFER TO SHEET A00-01 FOR ADDITIONAL GENERAL NOTES.
3. REFER TO SHEET A16-01 FOR GAME LINE DIAGRAMS.
4. REFER TO SHEET A43-00 FOR TOILET GROUPS AND ACCESSORIES.
5. REFER TO A63-01 FOR INTERIOR GLAZING ELEVATIONS.
6. REFER TO A64-01 FOR EQUIPMENT SCHEDULE.
7. PROVIDE STEEL TUBE SUPPORT STIFFENER WITHIN WALL AS REQUIRED TO WITHSTAND LATERAL FORCE EXERTED ON WALL BY SEAL OF OPERABLE PARTITION SYSTEM.



1	ISSUED FOR PERMIT REVISIONS	01/10/2022
	ISSUE FOR BID/PERMIT	10/15/2021
MARK	ISSUE	DATE
Job Number	022527 000	TITLE



1 FLOOR PLAN - LEVEL 02
1/8" = 1'-0"

FLOOR PLAN LEGEND

◻	<<< Indicates Sheet Keynote on Plan
1 XXX	

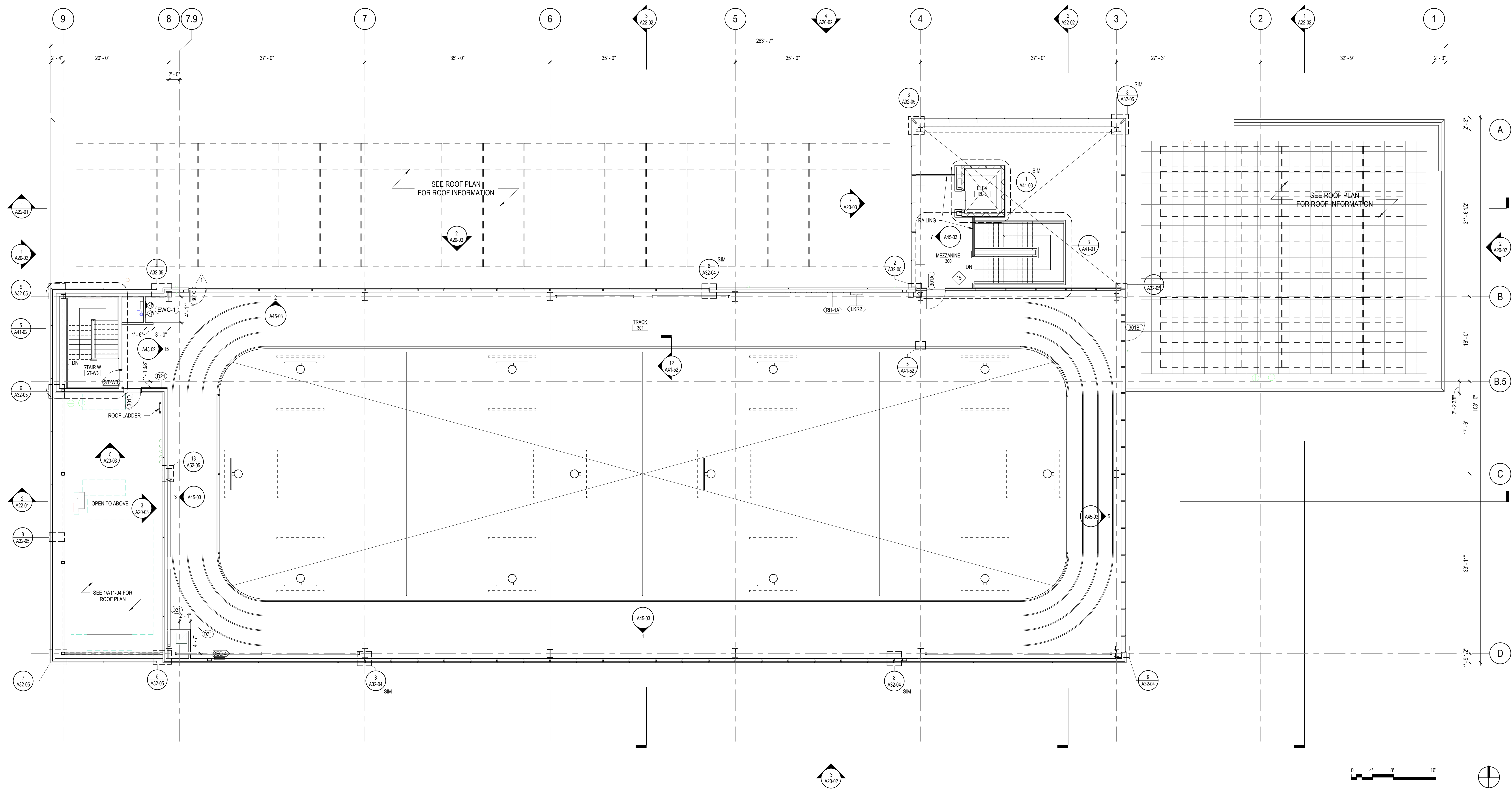
- XX A-XXX EXTERIOR ELEVATION TAG
- XX A-XXX BUILDING SECTION TAG
- (NUMERICAL) INTERIOR GLAZING REF: A63-01 FOR GLAZING ELEVATIONS.
- (301A) DOOR TAG REF: A62-01 FOR DOOR SCHEDULE.
- (A11) PARTITION TAG REF: A61-01 FOR CHARTS
- (XXXX) EQUIPMENT TAG REF: A64-01 FOR EQUIPMENT SCHEDULE
- FD FLOOR DRAIN

FLOOR PLAN GENERAL NOTES

1. PARTITION TYPES LISTED ON A61-01 REFER TO G01 SERIES "CODE COMPLIANCE PLANS" FOR GRAPHIC EXTENT OF FIRE RATED PARTITIONS. REFER TO PARTITION TYPE CHARTS ON A61-01 FOR LOCATION OF SOUND ATTENUATION BLANKETS.
2. REFER TO SHEET A00-01 FOR ADDITIONAL GENERAL NOTES.
3. REFER TO SHEET A16-01 FOR GAME LINE DIAGRAMS.
4. REFER TO SHEET A43-00 FOR TOILET GROUPS AND ACCESSORIES.
5. REFER TO A63-01 FOR INTERIOR GLAZING ELEVATIONS.
6. REFER TO A64-01 FOR EQUIPMENT SCHEDULE.
7. PROVIDE STEEL TUBE SUPPORT STIFFENER WITHIN WALL AS REQUIRED TO WITHSTAND LATERAL FORCE EXERTED ON WALL BY SEAL OF OPERABLE PARTITION SYSTEM.



2	ISSUED FOR PERMIT REVISIONS	01/10/2022
1	ADDENDUM #1	10/26/2021
	ISSUE FOR BID/PERMIT	10/15/2021
	ISSUE	09/15/2021
Job Number	022527.000	TITLE



1 FLOOR PLAN - MEZZANINE
1/8" = 1'-0"

FLOOR PLAN LEGEND

◁◁◁	Indicates Sheet Keynote on Plan
1 XXX	

- XX A-XXX EXTERIOR ELEVATION TAG
- XX A-XXX BUILDING SECTION TAG
- 1 (NUMERICAL) INTERIOR GLAZING REF: A63-01 FOR GLAZING ELEVATIONS.
- 301A DOOR TAG REF: A62-01 FOR DOOR SCHEDULE.
- A11 PARTITION TAG REF: A61-01 FOR CHARTS
- XXXXX EQUIPMENT TAG REF: A64-01 FOR EQUIPMENT SCHEDULE
- FD FLOOR DRAIN

**FLOOR PLAN
GENERAL NOTES**

1. PARTITION TYPES LISTED ON A61-01. REFER TO G01 SERIES "CODE COMPLIANCE PLANS" FOR GRAPHIC EXTENT OF FIRE RATED PARTITIONS. REFER TO PARTITION TYPE CHARTS ON A61-01 FOR LOCATION OF SOUND ATTENUATION BLANKETS.
2. REFER TO SHEET A00-01 FOR ADDITIONAL GENERAL NOTES.
3. REFER TO SHEET A16-01 FOR GAME LINE DIAGRAMS.
4. REFER TO SHEET A43-00 FOR TOILET GROUPS AND ACCESSORIES.
5. REFER TO A63-01 FOR INTERIOR GLAZING ELEVATIONS.
6. REFER TO A64-01 FOR EQUIPMENT SCHEDULE.
7. PROVIDE STEEL TUBE SUPPORT STIFFENER WITHIN WALL AS REQUIRED TO WITHSTAND LATERAL FORCE EXERTED ON WALL BY SEAL OF OPERABLE PARTITION SYSTEM.